



TRANSCENDING
BARRIERS METAL

(801) 462-0160

WWW.TBMETALS.COM

STANDARD COLOR CHART

Cool coatings with premium heat-reflective technology from Coated Metals Group.
 Durapon 70™ Full Strength 70% PVDF and Dura Coat XT40S™ Siliconized Polyester (SMP) Pre-Finished Steel Flat Sheets & Coil.

* Metallic Color
 ** Premium Finish

					
Deep Black	Matte Black	Charcoal Gray	Musket Gray	Slate Gray	Ash Gray
					
Almond	Bright White	Bone White	Stone White	Cityscape	Pebble Clay
					
Sandstone	Sierra Tan	Antique Ivory	Medium Bronze	Dark Bronze	Extra Dark Bronze
					
Regal Red	Colonial Red	Burgundy	Terra Cotta	Mansard Brown	Burnished Slate
					
Hartford Green	Classic Green	Hemlock Green	Teal	Slate Blue	Royal Blue
					
Galvalume Plus	*Copper Penny	*Weathered Zinc	*Silver Metallic	*Champagne	*Aged Copper
					
** Black Ore	** Vintage	** Western Rust	** Rustic Rawhide	** Custom Color	



TEX3D SMP Finishes

Cool coatings with premium heat-reflective technology and tactile textured finish from Coated Metals Group
Dura Coat XT40S™ Siliconized Polyester (SMP) Pre-Finished Steel Flat Sheets & Coil.

* Metallic Color
** Premium Finish



Matte Black



Charcoal Gray



Musket Gray



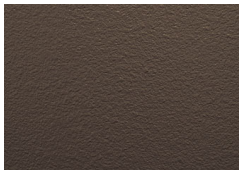
Slate Gray



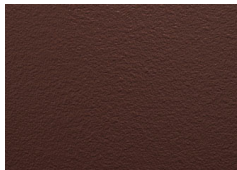
Dark Bronze



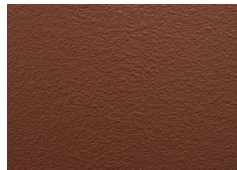
Burnished Slate



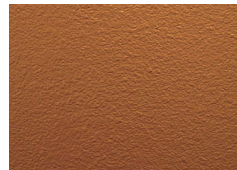
Mansard Brown



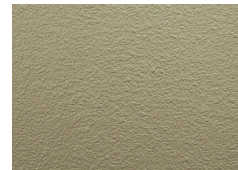
Burgundy



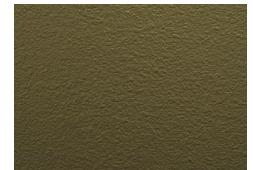
Colonial Red



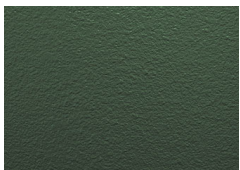
Terra Cotta



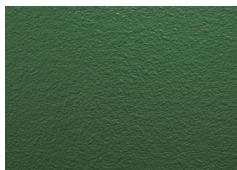
Sierra Tan



Medium Bronze



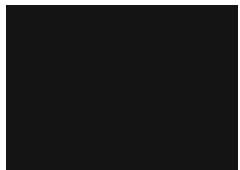
Hartford Green



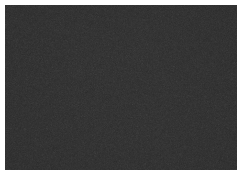
Classic Green

Ultra Low Gloss PVDF Finishes

Cool coatings with premium heat-reflective technology and Ultra-Low Gloss, Low-Sheen technology from Coated Metals Group.
Dura Coat Durapon 70™ Full-Strength 70% PVDF Pre-Finished Steel Flat Sheets & Coil



Deep Black



Carbon



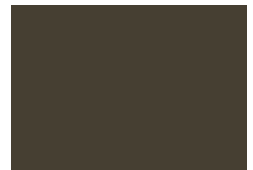
Charcoal Gray



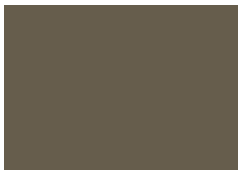
Slate Gray



Dark Bronze



Burnished Slate



Iron Ore

Metal samples and additional custom colors are available upon request. Please refer to the Stock Availability matrix for gauge, width, and paint finish availability.

Oil canning is an inherent part of light gauge cold-formed metal products and is not cause for coil, sheet, or panel rejection. Protective film must be removed immediately after installation. Color and sizes can change without notice. Additional sizes, gauges, and colors may be available, please contact your local sales representative

Colors represented on this electronic chart may not exactly match actual material. All colors should be verified using actual metal samples. Mismatch of electronic representations and actual material shall not be accepted as cause for rejection. Many finishes are production batch-specific and may result in slight variations in visual match. Do not mix or use materials purchased from separate sales orders on individual projects. Visual variation between separate order batches used on individual projects shall not constitute cause for rejection or claim.



Dura Coat
PRODUCTS
An Axalta Coating Systems Company

MADE IN AMERICA



Durapon70
Ceramel XT-40S

Color Name	ULTRA-COOL RATINGS			22 ga.	24 ga.		24 ga. ULG		26 ga.		26 ga. TEX3D		28 ga.
	Reflect	Emiss	SRI	48"	40"	48"	40"	48"	40"	48"	40"	48"	42"
Acrylic Coated Galvalume	N/A	N/A	N/A	•	•	•			•	•			•
Aged Copper	26.80%	0.85	26		•	•							
Almond	61.40%	0.83	72	•	•	•			•				•
Antique Ivory	N/A	N/A	N/A						•				•
Ash Gray	49.80%	0.85	56			•			•				
Black Ore	8.00%	0.9	4		•	•							
Bone White	67.60%	0.84	81	•	•	•			•				•
Bright White	67.80%	0.84	81			•			•				
Burgundy	27.10%	0.85	26		•	•			•	•	•	•	
Burnished Slate	25.10%	0.83	33		•	•	•	•	•	•	•	•	
Carbon	5.80%	0.85	0				•	•					
Champagne	47.20%	0.8	51			•							
Charcoal Gray	25.30%	0.84	23	•	•	•	•	•	•	•	•	•	•
Cityscape	45.20%	0.87	51		•	•							
Classic Green	30.50%	0.85	30		•	•			•	•	•	•	•
Colonial Red	33.20%	0.86	35		•	•			•	•	•	•	•
Copper Penny	43.90%	0.84	48		•	•			•				
Dark Bronze	27.70%	0.85	27	•	•	•	•	•	•	•	•	•	•
Deep Black	26.70%	0.84	25	•	•	•	•	•	•	•			•
Extra Dark Bronze	N/A	0.88	-2		•	•							
Hartford Green	27.10%	0.83	25	•	•	•			•	•	•	•	•
Hemlock Green	31.10%	0.85	31		•	•							
Iron Ore	26.90%	0.85	26				•	•					
Mansard Brown	26.00%	0.85	25	•	•	•			•	•	•	•	•
Matte Black	26.80%	0.84	25	•	•	•			•	•	•	•	•
Medium Bronze	30.90%	0.86	31	•	•	•			•	•	•	•	•
Musket Gray	34.80%	0.83	35		•	•			•	•	•	•	
Pebble Clay	43.40%	0.84	47						•				•
Regal Red	38.50%	0.85	41			•			•				
Royal Blue	26.80%	0.85	26		•	•			•				
Rustic Rawhide	31.00%	0.88	32			•							
Sandstone	59.70%	0.82	69	•		•							
Sierra Tan	45.80%	0.83	50	•	•	•			•	•	•	•	•
Silver	55.60%	0.81	63		•	•							
Slate Blue	32.80%	0.84	33		•	•			•				
Slate Gray	37.50%	0.82	38	•	•	•	•	•	•	•	•	•	•
Stone White	65.60%	0.82	77			•							
Teal	27.90%	0.85	27		•	•							
Terra Cotta	41.90%	0.83	45			•			•	•	•		
Vintage	30.00%	0.7	22		•	•							
Weathered Zinc	38.30%	0.85	41		•	•							
Western Rust	24.00%	0.87	23		•	•							

