

PROFILE
SS675

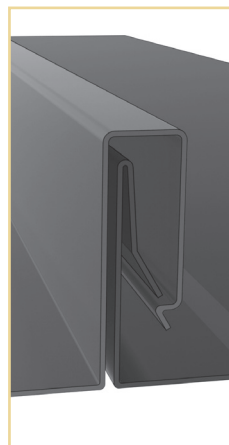
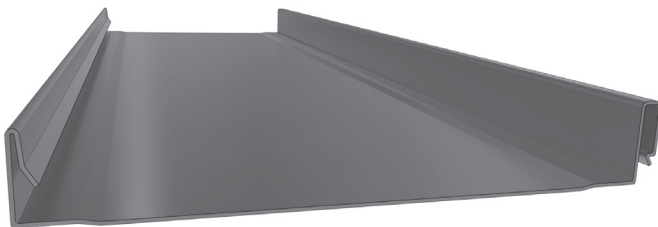


TRANSCENDING
B A R R I E R S M E T A L

WEATHER TIGHTNESS WARRANTY APPROVED

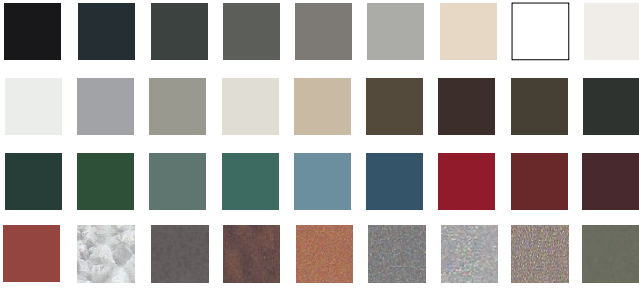
The SS675 features a 1 3/4" seam that gives it great structural capabilities and uses concealed clips and fasteners that allow the panel to withstand thermal movement. Its watertight design requires no mechanical seaming and its snap lock design makes installation quick and easy. Approved for weather tightness warranty projects and offering a variety of production options, the SS675 is sure to bring exquisite elegance to your next project design.

IDEAL APPLICATION FOR COMMERCIAL + RESIDENTIAL

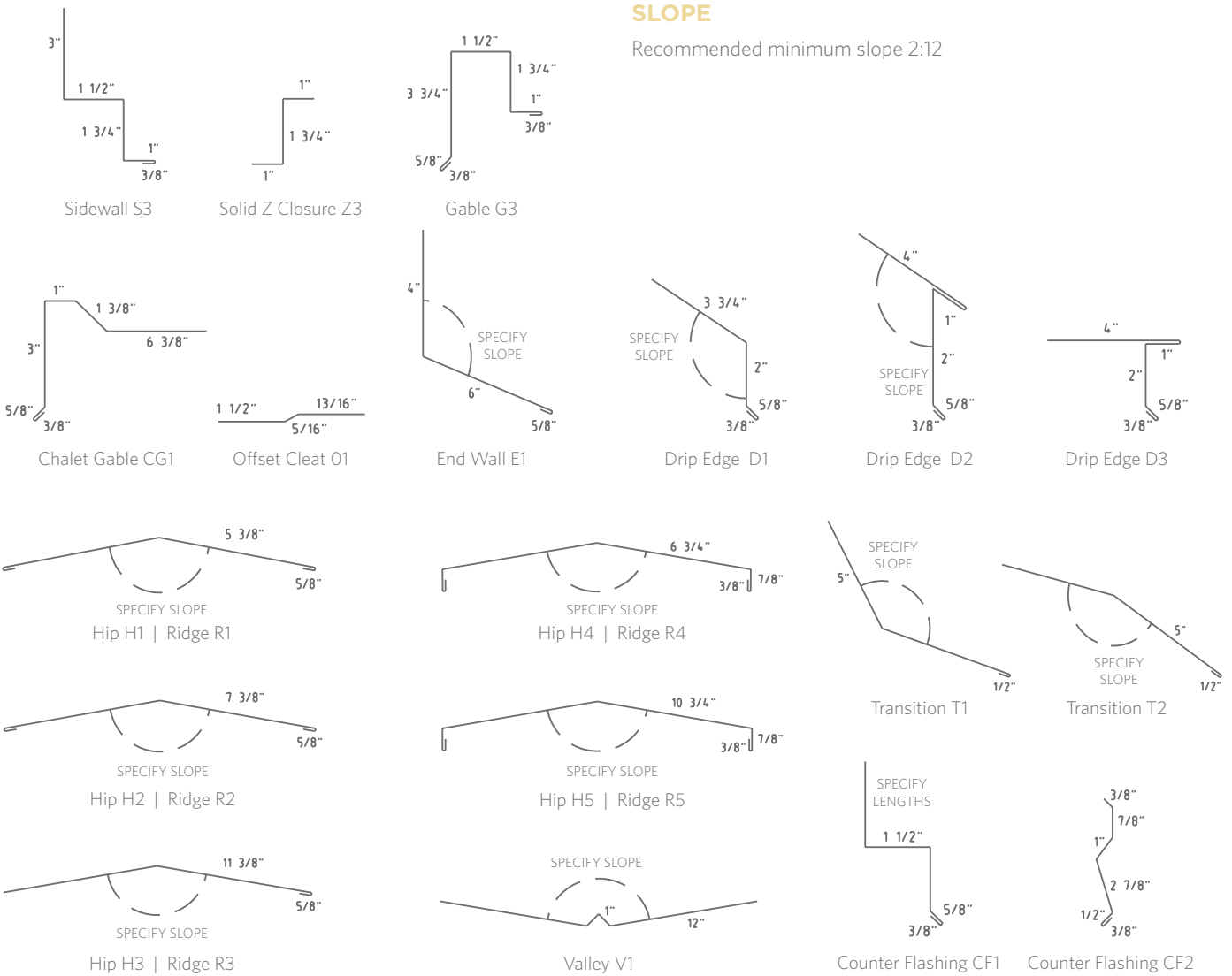




COLOR PROFILES



TRIMS



STANDARD WIDTHS

14" | 18"

FINISHES

22 ga | 24 ga | 26 ga | 28 ga | 26 ga TEX | Aluminum .032 | .040

PRODUCTION OPTIONS

Factory made or field rolled to exact lengths.

Optional: striation, flat panel, clip relief

INSTALLATION

Can be installed over steel decking with Polyiso, or plywood decking with high temp ice & water shield.

SLOPE

Recommended minimum slope 2:12



Panels have demonstrated compliance with UL580, Class 90.

Product Description: Ultra-Clad pre-finished metal features Dura Coat Durapon 70% full strength PVDF paint finishes formulated with Cool technology. This high performance product provides the ultimate in resistance against fading and weathering. In addition to our standard colors, custom colors are also available upon request.

Color Samples: Colors shown represent the actual colors as accurate as modern printing technology will permit. Colors represented on electronic charts may not match actual material. All colors should be verified using actual metal samples. Mismatch of electronic color representation and actual material shall not be accepted as a cause for rejection. Free metal samples are available upon request.