

PROFILE
FF100

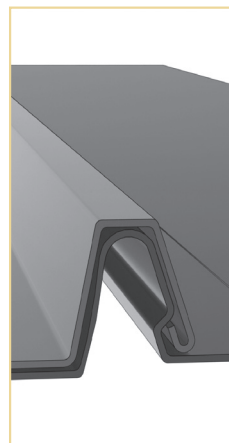
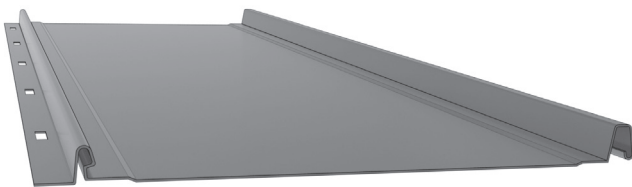


TRANSCENDING
B A R R I E R S M E T A L

WEATHER TIGHTNESS WARRANTY APPROVED

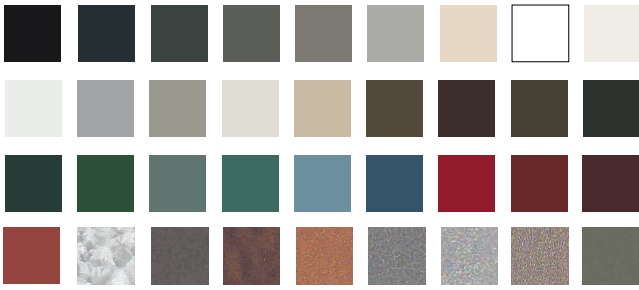
Our FF100 is a classic design that has been used for decades and offers excellent protection from mother nature. The concealed 1" snap lock system eliminates the need for clips making it the most economical and easiest to install concealed fastener panel. Design your next project using this sleek panel with a variety of production options to add classic character and superior durability.

IDEAL APPLICATION FOR RESIDENTIAL

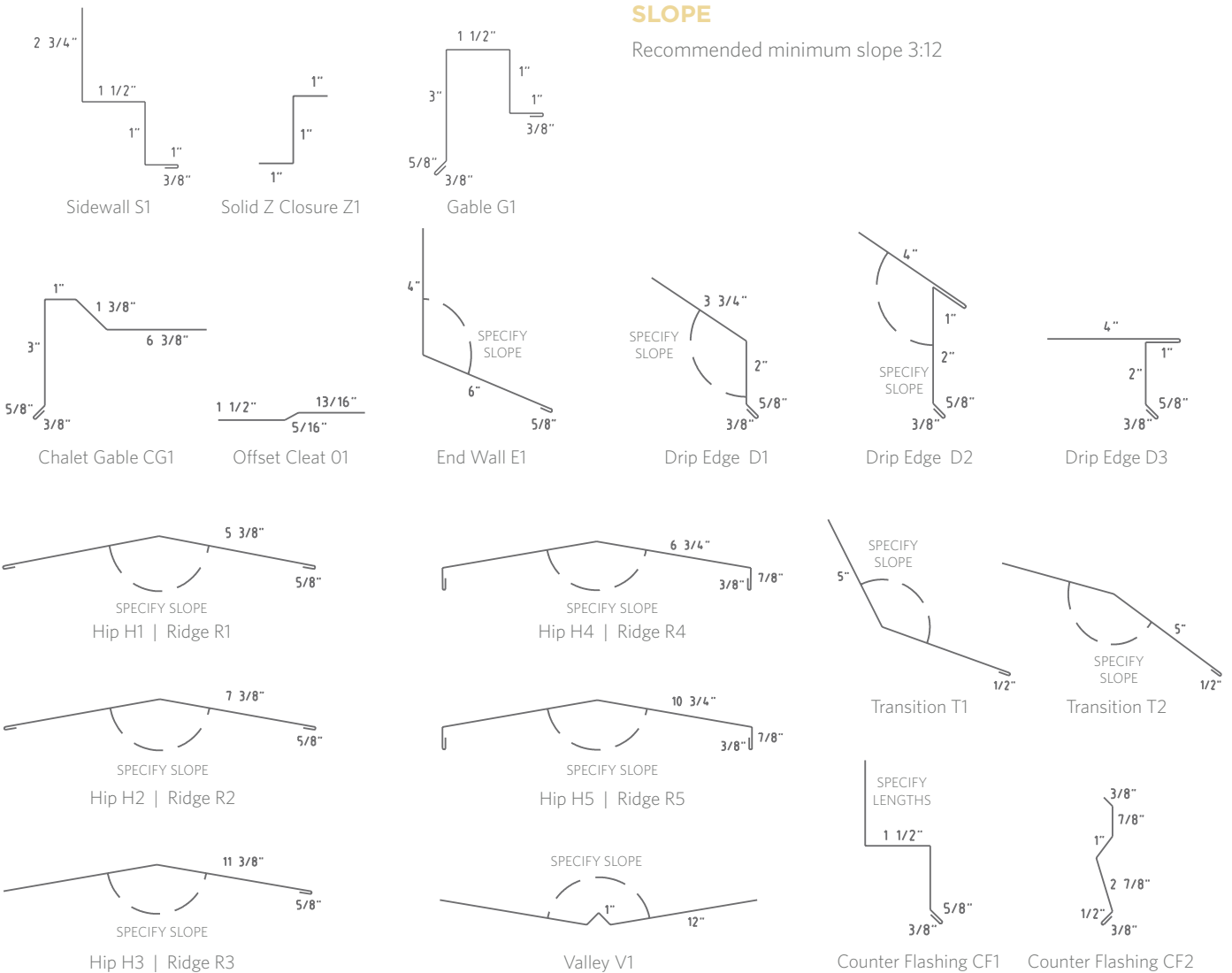




COLOR PROFILES



TRIMS



STANDARD WIDTHS

12" | 16" | 20"

FINISHES

22 ga | 24 ga | 26 ga | 28 ga | 26 ga TEX | Aluminum .032 | .040

PRODUCTION OPTIONS

Factory made or field rolled to exact lengths.
Optional: striation, flat panel, clip relief

INSTALLATION

Can be installed over steel decking with Polyiso, or plywood decking with high temp ice & water shield.

SLOPE

Recommended minimum slope 3:12



Panels have demonstrated compliance with UL580, Class 90.

Product Description: Ultra-Clad pre-finished metal features Dura Coat Durapon 70% full strength PVDF paint finishes formulated with Cool technology. This high performance product provides the ultimate in resistance against fading and weathering. In addition to our standard colors, custom colors are also available upon request.

Color Samples: Colors shown represent the actual colors as accurate as modern printing technology will permit. Colors represented on electronic charts may not match actual material. All colors should be verified using actual metal samples. Mismatch of electronic color representation and actual material shall not be accepted as a cause for rejection. Free metal samples are available upon request.